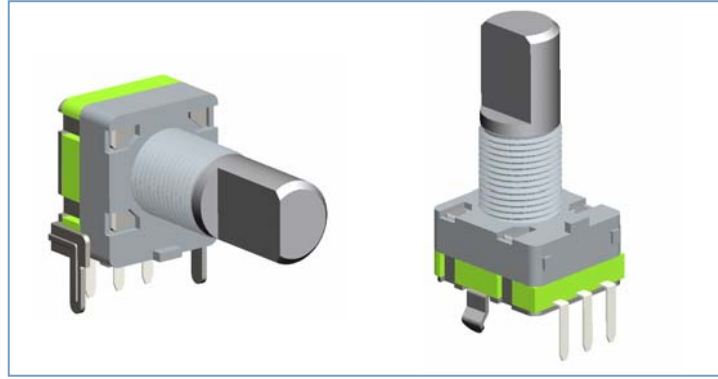
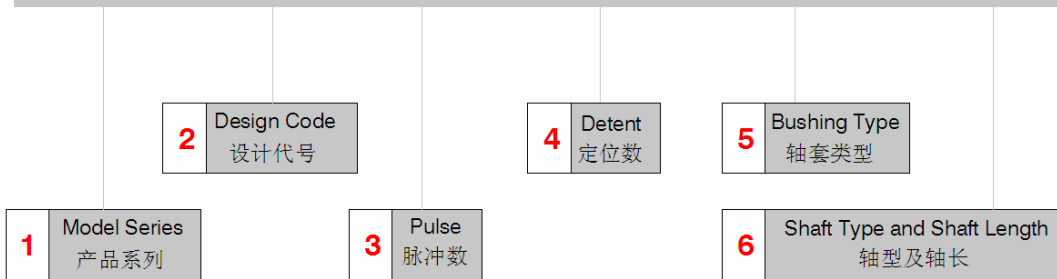


ED09 Series Rotary Encoder



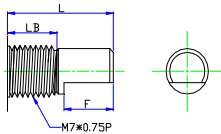
ED09 — 12 — 10P — 20LC — M7B7 — F15A7



Ordering Information 订货说明		Code 代码			
1	Moder Series 产品系列	ED09			
2	Design Code 设计代号		See Note 1 (ED09 Series Dimensions) 附件 1 (ED09 系列产品图)		
3	Pulse 脉冲数	10P	10 脉冲		
		20P	20 脉冲		
4	Detent 定位数	0	10 Pulse Without Detent 10 脉冲不带定位	Code 代码	Detent torque 定位扭矩
		20	10Pulse With 20 Detent 10 脉冲带 20 定位		LC
		0	20Pulse Without Detent 20 脉冲不带定位	HC	90±20gf.cm
		20	20 Pulse With 20 Detent 20 脉冲带 20 定位	HHC	130±20gf.cm
5	Bushing Type 轴套类型	M7B5	M7 Threaded Bushing, Bushing Length 5mm / 7mm / 10mm M7 螺纹, 轴套长度可选 5mm / 7mm / 10mm		
		M7B7			
		M7B10			
6	Shaft Type and Shaft Length 轴型及轴长	See Note 2 附表 2			

Note 2: Shaft Type and Shaft Length 轴型及轴长

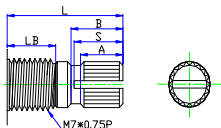
F 轴



LB	5	5	5	5	5	5	5	5	5/7	5/7	5/7	5/7	5/7	5/7
L	10	11.5	12	12.5	13	13.5	14	15	17.5	18	20	25	30	
F	4	5	5	5	7	7	7	7	9.5	7	10	12	12	

说明: “L” 长为 15 以上, LB 尺寸为: 5mm 和 7mm 皆可

Y 轴



LB	5	5	5	5	5	5	5	5	5/7	5/7	5/7	5/7	5/7
L	10	11.5	12	12.5	13	13.5	14	15	17.5	18	20	25	30
A	4	5	5	5	7	7	7	7	9.5	7	10	12	12
S	4.5	5.5	5.5	5.5	7.5	7.5	7.5	7.5	10.5	8	11	13	13
B	4.5	6	6	6	8	8	8	8	11.5	9	12	14	14

说明: “L” 长为 17.5 以上, LB 尺寸为: 5mm 和 7mm 皆可

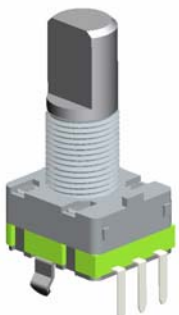
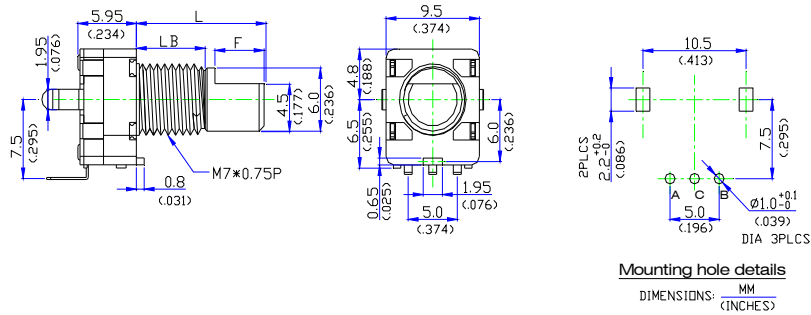
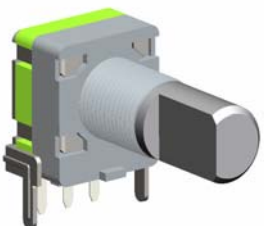
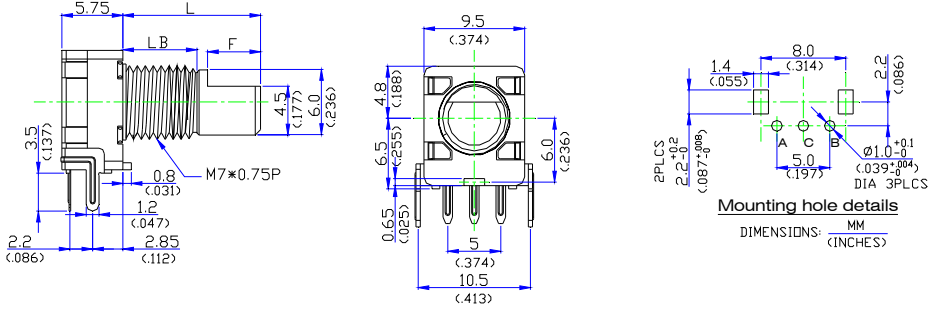
MECHANICAL SPECIFICATION 机械性能

Operating Temperature 工作温度	-30°C ~ +70°C
Shaft Rotation Force 操作力矩	20gf.cm ~ 200gf.cm
Soldering Heat 焊接温度	260°C, 3~5sec
Push-pull Strength 轴推拉强度	10.2 Kgf.cm
Total Rotation Angle 全回转角度	360°

ELECTRICAL SPECIFICATION 电气性能

Power Rating 额定功率	DC5V 10mA(Each Bit)
Output Signals 输出信号	A、B 2 signals
Locate Point 定位点	20detent points, 360°
Phase-Difference ΔT 相位差	0.08T Min. (Measurement shall be made under the condition which the shaft is rotated in 360°/S)
Insulation resistance 绝缘电阻	More than 100M Ω (AT 250V DC)
Contact resistance 接触电阻	1 Ω Max
Withstand Voltage 耐电压	For 1 minute at 100V AC
Rotational life 回转寿命	100, 000 cycles

Note 1 :ED09 Series Dimensions

<p>ED0912-□P-□C-M7B□</p> 	 <p>Mounting hole details DIMENSIONS: MM (INCHES)</p>
<p>ED0915-□P-□C-M7B□</p> 	 <p>Mounting hole details DIMENSIONS: MM (INCHES)</p>